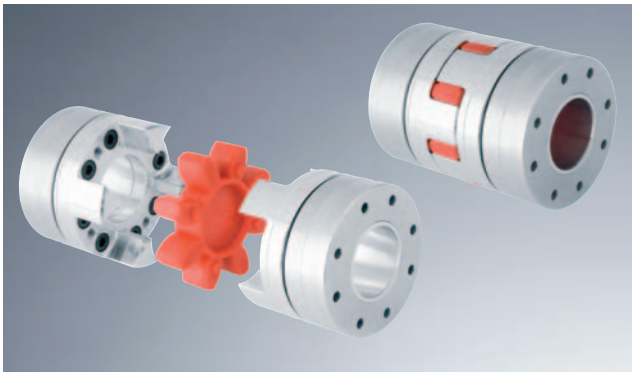

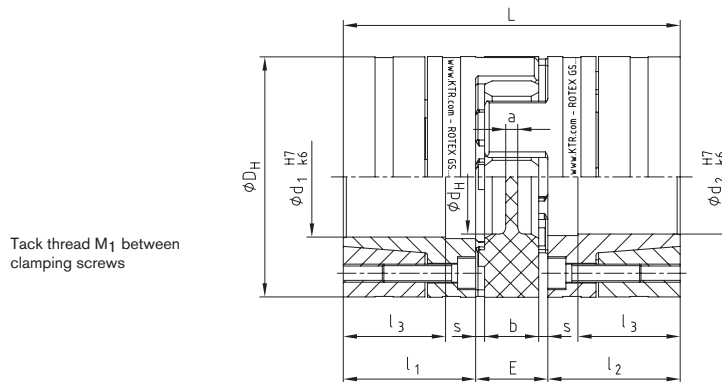


### Clamping ring hubs light



- Backlash-free shaft coupling with integrated clamping system
- As an example, use on feed/main spindles, drives on machine tools, handling units, etc.
- Low weight and low mass moment of inertia due to a design fully made from aluminium
- Easy assembly due to internal clamping screws and block assembly
- High friction torques
- High smoothness of running, application up to a peripheral speed of 50 m/s
-  Approved and certified according to EC Standard 94/9/EC

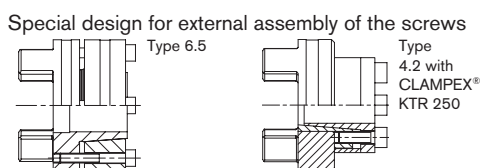


ROTEX® GS clamping ring hubs light Hub and clamping ring material aluminium																				
Size	Spider torque T <sub>KN</sub> [Nm] <sup>1)</sup>					Dimensions [mm]								Clamping screws DIN EN ISO 4762				Weight per hub with max. bore [kg]	Mass moment of inertia per hub with max. bore [kgm <sup>2</sup> ]	
	92 Sh-A	98 Sh-A	64 Sh-D	maxi.d	D <sub>H</sub> <sup>2)</sup>	d <sub>H</sub>	L	l <sub>1</sub> ; l <sub>2</sub>	l <sub>3</sub>	E	b	s	a	M	number z	T <sub>A</sub> [Nm]	M <sub>1</sub>			
14	7,5	12,5	16,0	14	30	10,5	50	18,5	13,5	13	10	1,5	2,0	M3	4	1,34	M3	0,032	0,04 x 10 <sup>-4</sup>	
19	12	21	26	20	40	18	66	25	18	16	12	2,0	3,0	M4	6	3	M4	0,077	0,19 x 10 <sup>-4</sup>	
24	35	60	75	32	55	27	78	30	22	18	14	2,0	3,0	M5	4	6	M5	0,162	0,78 x 10 <sup>-4</sup>	
28	95	160	200	38	65	30	90	35	27	20	15	2,5	4,0	M5	8	6	M5	0,240	1,70 x 10 <sup>-4</sup>	
38	190	325	405	48	80	38	114	45	35	24	18	3,0	4,0	M6	8	10	M6	0,490	5,17 x 10 <sup>-4</sup>	
42	265	450	560	51	95	46	126	50	35	26	20	3,0	4,0	M8	4	25	M8	0,772	11,17 x 10 <sup>-4</sup>	
48	310	525	655	55	105	51	140	56	41	28	21	3,5	4,0	M10	4	49	M10	1,066	18,81 x 10 <sup>-4</sup>	

<sup>1)</sup> Further spiders/selection see page 148-151  
<sup>2)</sup> ØD<sub>H</sub> + 2 mm with high speeds for expansion of spider

Transmittable friction torques T <sub>R</sub> [Nm] of clamping ring hub type 6.0 light *																					
Size	Ø6	Ø10	Ø11	Ø14	Ø15	Ø16	Ø19	Ø20	Ø24	Ø25	Ø28	Ø30	Ø32	Ø35	Ø38	Ø40	Ø42	Ø45	Ø48	Ø50	Ø55
14	5,1	8,5	10,7	24																	
19		16	19	39	47	34	54	62													
24				56	66	67	98	110	127	139	175										
28							139	130	198	216	244	281	248	302	324						
38								198	297	324	386	443	443	532	538	597	656	609			
42											443	507	533	637	689	761	750	856	963	974	
48												566	632	757	835	922	935	1066	1200	1125	1326

\* The transmittable torques of the clamping connection consider the max. clearance with shaft fit k6 / bore H7. With bigger clearance the torque is reduced. As shaft material steel or nodular iron with a yield point of approx. 250 N/mm<sup>2</sup> or more can be used. For the stiffness calculation of the shaft/hollow shaft see KTR standard 45510 at our homepage www.ktr.com.



Ordering example:	ROTEX® GS 24 98 Sh-A-GS d20			6.0 light – Ø 24		6.0 light – Ø 20	
	Coupling size	Spider hardness	Optional: Bore diameter in spider	Hub design	Finish bore	Hub design	Finish bore