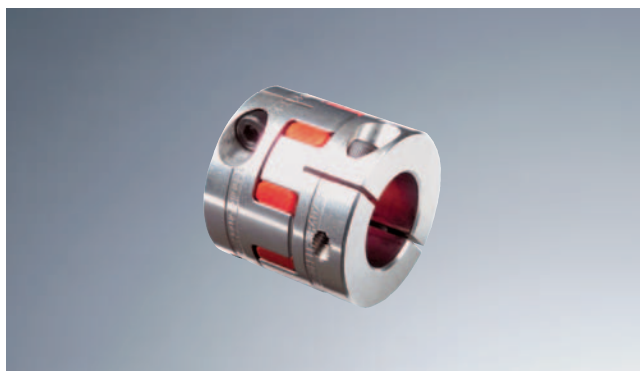
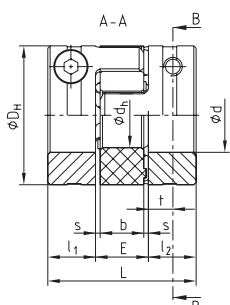


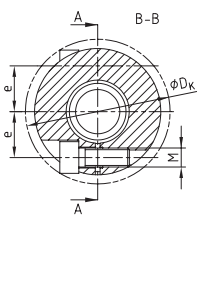
Compact



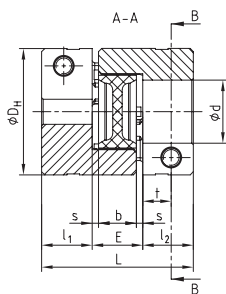
- Shorter by up to 1/3
- High power density, design with axial slot, patent pending (from size 24)
 - Good concentric running properties
 - Uniform power transmission due to cams without slots
 - Improved balancing quality
- Finish bore according to ISO fit H7, feather key optionally available from Ø 6 mm according to DIN 6885 sheet 1 – JS9.
- Ex Approved according to EC Standard 94/9/EC (hubs without feather key according to category 3)



ROTEX® GS 8, 13, 16



ROTEX® GS 7 - 19 Compact single slotted design 2.8



ROTEX® GS 24 - 38 Compact axially slotted design 2.8

ROTEX® GS Compact																		
Size	Torque of spider T_{KN} [Nm] ¹⁾				Dimensions [mm]													T_A [Nm]
	80Sh-A	92Sh-A	98Sh-A	64Sh-D	d max	D_H	D_K	L	l_1, l_2	E	b	s	d_H	t	e	M		
Hub design single slotted 2.8/2.9																		
7	0,7	1,2	2,0	2,4	7	14	16,6	18	5	8	6	1	-	2,5	5	M2	0,37	
NEW 8	0,5	-	2,0	2	8	16	17,1	20	7	6	5	0,5	6,2	4	5,5	M2	0,52	
9	1,8	3,0	5,0	6	9	20	21,3	24	7	10	8	1	-	3,5	6,7	M2,5	0,76	
NEW 12	3,0	5,0	9,0	12	12	25	26,2	26	7	12	10	1	-	3,5	8,3	M3	1,34	
NEW 13	3,6	-	11	14,5	12,7	25	25,7	26	8	10	8	1	10	4	8	M3	1,9	
14	4,0	7,5	12,5	16	16 ²⁾	30	30,5	32	9,5	13	10	1,5	-	4,5	9,6	M4	2,9	
NEW 16	5,0	-	15	19	16	30	32,5	32	10,3	11,4	9,4	1	14	5,3	10,5	M4	4,1	
19	6,0	12,0	21,0	26,0	24 ²⁾	40	45,0	50	17	16	12	2	-	9	14,0	M6	10	
Hub design with axial slot 2.8/2.9																		
24	-	35	60	75	32	55	57,5	54	18	18	14	2	-	11	20,0	M6	10	
28	-	95	160	200	35	65	69,0	62	21	20	15	2,5	-	12	23,8	M8	25	
38	-	190	325	405	45	80	86,0	76	26	24	18	3	-	16	30,5	M10	49	

Transmittable friction torques T_R [Nm] of clamping hub without keyway type 2.8 1)																											
Size	Ø3	Ø4	Ø5	Ø6	Ø7	Ø8	Ø9	Ø10	Ø11	Ø12	Ø14	Ø15	Ø16	Ø18	Ø19	Ø20	Ø24	Ø25	Ø28	Ø30	Ø32	Ø35	Ø38	Ø40	Ø42	Ø45	
Hub design single slotted 2.8																											
7	0,8	0,9	1,0	1,0	1,1																						
8	0,65	0,85	1,1	1,3	1,5	1,7																					
9		1,9	2,0	2,1	2,2	2,3	2,4																				
12		3,4	3,6	3,7	3,9	4,1	4,2	4,4	4,6	4,7																	
13		2,2	2,75	3,3	3,8	4,4	4,9	5,5	6	6,6																	
14			7,1	7,4	7,7	8,0	8,2	8,5	8,8	9,1	5,8 ²⁾	5,9 ²⁾	6,1 ²⁾														
16			4,8	5,8	6,4	7,7	8,7	9,6	11,6	11,5	13,5	14,5	15,4														
19						24,3	25,0	25,7	26,3	27,0	28,4	29,0	29,7	31,1	31,7	32,4	25,0 ²⁾										
Hub design with axial slot 2.8																											
24								21	23	25	30	32	34	38	40	42	51	53	59	63	68						
28											54	58	62	70	74	78	93	97	109	116	124	136					
38											92	99	111	117	123	148	154	173	185	197	216	234	247	259	278		

¹⁾ Further spiders/selection see page 148-151

²⁾ Size 14 with screw M3 and dimension e=10.4, size 19 with screw M5 and dimension e=15.5

2.8 = without feather key

2.9 = with feather key

Ordering example:

ROTEX® GS 38	Compact	98 Sh-A-GS	d28	2.8 - Ø28	2.8 - Ø45
Coupling size	Type	Spider hardness	Optional: Bore diameter in spider	Hub design	Finish bore
				Hub design	Finish bore