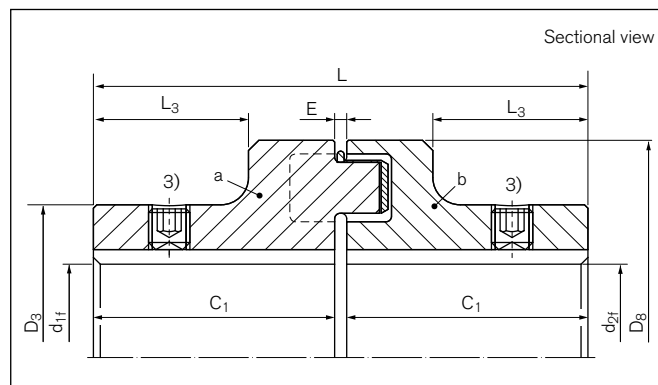
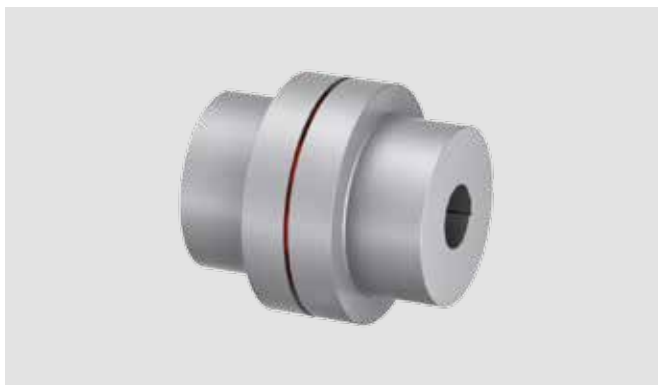


TSCHAN® Elastomer Jaw Couplings

# Type Nor-Mex® E

One-part design with 2 identical coupling hubs



**Dimensions / Technical data**

- D<sub>8</sub>** = Outer diameter
- T<sub>KNPb72</sub>** = Coupling nominal torque using element Pb72
- T<sub>KNPb82</sub>** = Coupling nominal torque using element Pb82
- n<sub>max</sub>** = Max. rotation speed
- d<sub>1f max</sub>** = Max. bore diameter d<sub>1f</sub> with keyway or other form closure connection
- d<sub>2f max</sub>** = Max. bore diameter d<sub>2f</sub> with keyway or other form closure connection
- D<sub>3</sub>** = Outer diameter hub
- C<sub>1</sub>** = Guided length in hub boring
- L** = Total length
- L<sub>3</sub>** = Section length of hub
- E** = Gap width between left and right component
- F<sub>E</sub>** = Tolerance of the gap width E
- G<sub>wa</sub>** = Weight of subassembly a
- G<sub>wub</sub>** = Weight, unbored

Size D <sub>8</sub>	Identifier	T <sub>KNPb72</sub> <sup>2)</sup>	T <sub>KNPb82</sub> <sup>2)</sup>	n <sub>max</sub>	d <sub>1f max</sub>	d <sub>2f max</sub>	D <sub>3</sub>	C <sub>1</sub>
mm		Nm	Nm	1/min	mm	mm	mm	mm
50	WN0105	13	20	5000	19	19	33	25
67	WN0106	22	35	5000	28	28	46	30
82	WN0108	48	75	5000	32	32	53	40
97	WN0109	96	150	5000	42	42	69	50
112	WN0111	150	230	5000	48	48	79	60
128	WN0112	250	380	5000	55	55	90	70
148	WN0114	390	600	4500	65	65	107	80
168	WN0116	630	980	4000	75	75	124	90
194	WN0119	1050	1650	3500	85	85	140	100
214	WN0121	1500	2400	3000	95	95	157	110
240	WN0124	2400	3700	2750	110	110	179	120
265	WN0126	3700	5800	2500	120	120	198	140
295	WN0129	4900	7550	2250	130	130	214	150
330	WN0133	6400	9900	2000	150	150	248	160
370	WN0137	8900	14000	1750	170	170	278	180
415	WN0141	13200	20500	1500	190	190	315	200
480	WN0148	18000	28000	2100	210	210	315	220
575	WN0157	27000	41000	1800	230	230	350	240

To continue see next page

## TSCHAN® Elastomer Jaw Couplings

## Type Nor-Mex® E

Identifier	L	L <sub>3</sub>	E	F <sub>E</sub>	G <sub>wa</sub> <sup>1)</sup>	G <sub>wub</sub>
	mm	mm	mm		kg	kg
WN0105	52,0	13	2,0	+/- 0,5	0,20	0,40
WN0106	62,5	15	2,5	+/- 0,5	0,50	1,00
WN0108	83,0	24	3,0	+/- 1,0	0,90	1,80
WN0109	103,0	30	3,0	+/- 1,0	1,70	3,40
WN0111	123,5	38	3,5	+/- 1,0	2,60	5,30
WN0112	143,5	45	3,5	+/- 1,0	4,10	8,20
WN0114	163,5	52	3,5	+/- 1,0	6,30	12,70
WN0116	183,5	56	3,5	+/- 1,5	9,60	19,30
WN0119	203,5	62	3,5	+/- 1,5	13,80	27,90
WN0121	224,0	68	4,0	+/- 2,0	19,10	38,20
WN0124	244,0	75	4,0	+/- 2,0	26,70	53,40
WN0126	285,5	90	5,5	+/- 2,5	37,50	75,00
WN0129	308,0	98	8,0	+/- 2,5	47,90	95,70
WN0133	328,0	104	8,0	+/- 2,5	66,50	132,90
WN0137	368,0	118	8,0	+/- 2,5	93,90	187,70
WN0141	408,0	135	8,0	+/- 2,5	129,70	259,30
WN0148	448,0	150	8,0	+/- 2,5	164,40	328,70
WN0157	488,0	170	8,0	+/- 2,5	233,50	467,00

1) Weight inclusive the half share of the intermediate ring

2) Attention on peak load - take into account maximum torque notified in the Nor-Mex® catalogue - data overview page 11

3) Set screw on demand

## Ordering example: Nor-Mex® E

Identifier	Pb	d <sub>1f</sub>	d <sub>2f</sub>	Further details*)
WN0119	82	75	70	*

\*) Without any other specification, we deliver as a standard: with set screws and keyway acc. to DIN 6885-1, keyway side fit P9, bore tolerance H7

Subject to technical change.