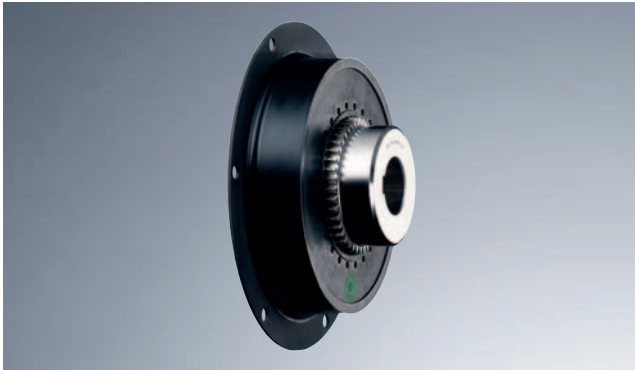
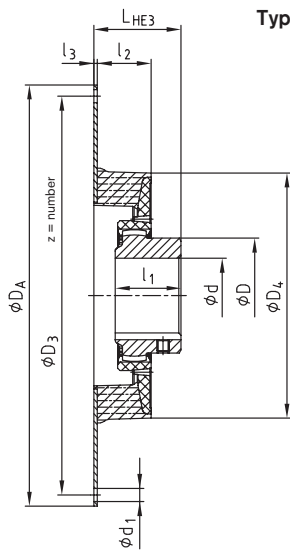


### Type HE3 and HE4

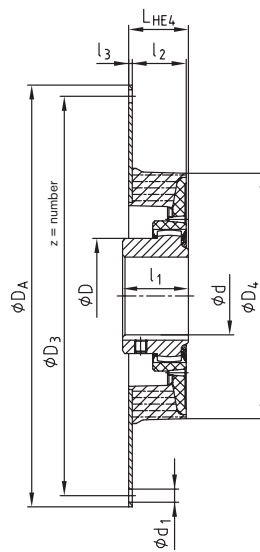


- Flange coupling with flanges according to SAE and special dimensions for mounting to I. C.-engines
- Easy assembly by axial plug-in
- Compensation of misalignment on driving and driven side
- Use of coupling hubs from the BoWex® standard programme
- Finish bore according to ISO fit H7, keyway to DIN 6885, sheet 1 (JS9) - inch bores, taper bores, spline clamping hubs
- Available in the hardness 40, 50 and 65 Shore A
- Approved according to EC Standard 94/9/EC

BoWex®  
BoWex® FLE-PA  
BoWex-ELASTIC®  
MONOLASTIC®



Type HE3



Type HE4

Flange dimension according SAE J 620 [mm]				
Size	DA	D3	z	d1
6 1/2"	215,90	200,02	6	9
7 1/2"	241,30	222,25	8	9
8"	263,52	244,47	6	11
10"	314,32	295,27	8	11
11 1/2"	352,42	333,37	8	11
14"	466,72	438,15	8	13
16"	517,50	489,00	8	13
18"	571,50	542,90	6	17
21"	673,10	641,35	12	17
24"	733,42	692,15	12	21

BoWex-ELASTIC® Type HE3 and HE4																								
Size	Bore d [mm]		Flange connection according to SAE - J 620												Dimensions [mm]						Weight with pilot bored coupling [kg]	Mass moment of inertia with pilot bored coupling		
	Pilot bored	max.	6 1/2"	7 1/2"	8"	10"	11 1/2"	14"	16"	18"	21"	24"	l3	l2	D4	D	l1	LHE3	LHE4	JA [kgm²]		JL [kgm²]		
42 HE	-	42	●	●									2	33	145	65	42	55	40	1,7	0,0057	0,0014		
48 HE	-	48		●	●								2	37	163	68	50	68	42	1,8	0,0060	0,0020		
						●														2,2	0,0065	0,0020		
G 65 HE	21	65				●							3	45	205	96	55	73	50	5,3	0,0242	0,0076		
							●													5,7	0,0372	0,0076		
80 HE	31	80				●							4	56	265	124	90	112	60	11,4	0,0388	0,0305		
G 80 HE	31	80					●						4	66	300	124	90	122	70	11,6	0,0702	0,0465		
100 HE	38	100						●					4	80	350	152	110	150	82	24,1	0,1951	0,1019		
125 HE	45	125							●				-							186	103	45,8	0,3013	0,2861
										●			6	92	416	192	140			192	109	47,7	0,4123	0,2861
G 125 HE	45	125									●		6	89	440	192	140	179	91	48,4	0,4781	0,2916		
												●								50,5	0,6380	0,2916		
150 HE	44	160											6	140	470	225	150	205	160	66,7	0,6918	0,5192		
																					1,1410	0,5192		
G 150 HE	44	160											6	140	504	225	150	205	160	76	0,754	0,651		
																					1,246	0,651		
200 HE	46	180											6	149	568	250	175	240	160	100	1,535	1,145		
																					1,514	1,145		
G200 HE	46	180											6	149	600	250	175	240	160	105	1,727	1,347		
																					2,106	1,347		

Ordering-example:	BoWex-ELASTIC® 80	HE3	40	10	112	U
	Coupling size	Type	Elastomer hardness	Flange diameter DA acc. to SAE or special	Mounting length LHE	Unbored or with finish bore